

## **Field Bill of Material (FBM)**

### **INSTALLATION of MICROCODE Level F70090**

**On 3746-900 attached to 3745-xxA**

**or**

**on 3746-950 alone**

**With Service Processor Type: 6563 65U (FC5054 or FC5450),**

**or**

**6275 Model 56U or 83U (FC 5053 or FC 5050),**

**or 7585-P02 (FC 5052)**

Written by: F.Bucquet  
Modified by: J.Holtslag  
Checked by: J.Combes, D.Esteve, P.Planas-Comas  
Approved by: T.Calvanico  
Reviewed by: R.Brewer



## Before Installation (Steps 1-8)

### 1.0 Machines Affected

3746 Models 9x0

- With Service Processor Type: 6563 Model 65U (FC 5054 or FC5450), 6275 Model 56U or 83U (FC 5053 or FC 5050), or 7585-P02 (FC 5052)
- With Microcode Level F70090.

**Checkpoint:** Check that the EC level is F70090.

If level is not present, feature 5802 and any prerequisite features must be ordered via MES and installed. This FBM applies to upgrade the SP and the 3746-9x0 with Feature 5802 already installed.

**Note:** Refer to 1.1, "Displaying the Level of Code Installed" for displaying the level of code.

#### 1.1 Displaying the Level of Code Installed

1. On **MOSS-E View** window, click on **help**.
2. On **Help** window, click on **About**
3. On the **MOSS-E View About** window, click on **Licensed Internal Code**. On the window obtained the code EC number is displayed.
4. Click on **Close**, then **OK** to leave the function.

### 2.0 Related BMs and ECs

#### 2.1 Co-requisite

(Must be installed together)

None

#### 2.2 Companion

(May be installed together)

None

## 3.0 BMs to be Installed

FBM	Title
10K8677	Installation of Microcode level F70090 on 3746-9x0 attached to 3745-xxA, and/or an 3746-950 stand-alone.

## 4.0 Preparation

- Familiarize yourself with the purpose and details of the installation instruction before negotiating machine time with the customer.
- Check all items listed on the BM(s) to determine that all parts have been received.
- Call your Support Center to obtain the Microcode Fixe(s) (MCF) to be installed with the new LIC.  
Or, connect to <http://www.lagaude.ibm.com/3746pe> and download the mandatory fixe(s).
- Obtain the maintenance password from the Customer.
- If the customer has subscribed to RETAIN, ensure that both the 3745 and 3746-9x0 types and models are registered in RETAIN (CCPF).

For U.S.A machines, please call the Raleigh Multiplexor Support Center and verify your machine's registration in CCPF for:

- The seven digit serial number of the 3745 and 3746-9x0 are correct.
- The three digit model designation for the 3745 and 3746-9x0 are correct.

## 5.0 Programming

**3746 Models 900 and 950 have a new requirement on NPM.**

All new 3746s and 3746 upgrades which include the Licensed Internal Code F64810 or above (F70090,...) have the following software requirement on NetView Performance Monitor (NPM):

The reporting of active PU counts per TIC3, which is provided by the 3746 and MAE Extended Functions 4 (feature 5810 or 5811), requires NPM Version 2 Release 4 with APAR OW37743 (PTF UW59877) at minimum.

This APAR is required also for NPM users who do not need the reporting of active PUs per TIC3, but are operating the 3746 and MAE Extended Functions 4 (FC 5810 or FC 5811), or 3746 Extended Functions 2 (FC 5802) or any machine equipped with Licensed Internal Code at the engineering change level F64810 or above (F70090,...).

The APAR is available for the following NPM releases:

3746 FBM	PN 10K8677 4 of 14	EC F70111 10 FEB 2000				
-------------	-----------------------	--------------------------	--	--	--	--

- NPM V2R2 (PTF UW59809)
- NPM V2R3 (PTF UW59810)
- NPM V2R4 (PTF UW59877)

## 6.0 Purpose and Description

Install the new level microcode level F70090.

- On the Service Processor, NNP(s) and MAE (if any), and
- Install on the 3746-9x0(s).

## 7.0 Installation Time

The **Update SP (and NNP) LIC non-active version** function is not operation- or traffic-disruptive. But, switching to the new version, after updating the non-active version, is disruptive. In the same way, changing the MAE LIC and performing a general IML are disruptive operations.

FB/M Installed	Machine Hrs	System Hrs	CE Hour	Nbr of CE
10K8677	1	0	1	1

## 8.0 Tools/Materials Required

None.

## Installation (Steps 9-12)

### 9.0 Safety

Not applicable.

### 10.0 Details of Installation

The current microcode level must be **F70090** (refer to 1.0, "Machines Affected" on page 3 for more information.). Use the **Update SP (and NNP) LIC non-active version** to upgrade the LIC without traffic- or operation-disruption. For detail, see 10.1, "Procedure" on page 7. Two phases take place.

#### Phase 1

During this phase, the non-active version of the LIC is updated, which is not disruptive.

#### Phase 2

During this phase, you switch to the non-active version that has been updated. This operation is disruptive. A general IML is required after switching to the new LIC version.

## 10.1 Procedure

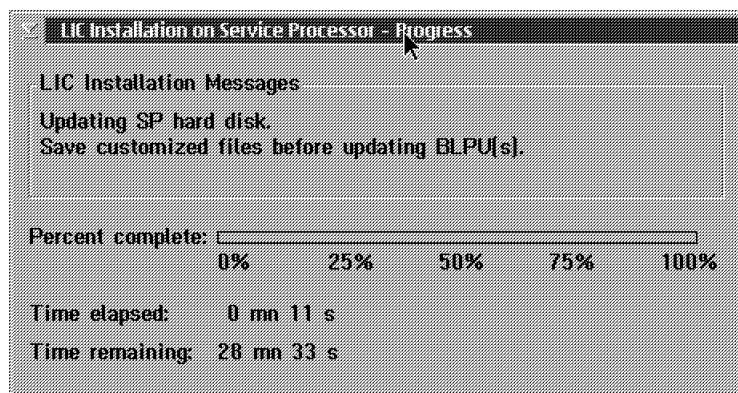
### 10.1.1 Update SP (and NNP) LIC Non-Active Version

#### Before you start...

- In order to use the current function, the LIC **F64810** or higher must be already installed.
- Upgrading the non-active version is not operation- or traffic-disruptive, but switching to the new version is disruptive.
- No maintenance window is required to run the current function.

#### Updating the Non-Active LIC Version

1. From the **MOSS-E View** window, double-click on the **Service Processor** icon.
2. Insert the CD-ROM that contains the new LIC version.
3. From the **Change Management** folder, select the **Update SP (and NNP) LIC on non-active version**.



4. Click **OK** when complete.

#### During the LIC Update...

You are constantly informed of the progress of the LIC updating. It takes about 10 minutes to update the LIC non-active version.

A pop-up window informs you when the LIC non-active version has been successfully updated. When displayed go to step 5.

5. After updating the LIC non-active version, switch to the new version.

**Before switching to the non-active version**



Switching to the non-active version is **disruptive**.

Therefore, check the moment at which the customer wants to switch to the active version. Switching to the non-active version can take place later.

**Switching to the Non-Active LIC Version**

- \_\_\_ 6. From the **Change Management** folder, select the **Switch to non-active version** function.
- \_\_\_ 7. Press the **Switch to inactive code level** pushbutton.
- \_\_\_ 8. Click **Yes** to confirm.

Switching to the inactive level takes about ten minutes. During this operation, the service processor and the network node processor(s) automatically re-boot.

- \_\_\_ 9. Click **OK** when complete. If there is an MAE FC3001 installed, the MAE LIC must be updated. Go to next step. Otherwise, go to step 16 on page 9 to perform a general IML.

**Changing the MAE LIC**

- \_\_\_ 10. From the **3746-900 menu**, select the **Multiaccess Enclosure (MAE) Management** folder.
- \_\_\_ 11. From the **Multiaccess Enclosure (MAE) Management** folder, select the **Install/Remove/Change LIC on MAE** function, in order to replace the MAE LIC on the MAE hard disk with the MAE LIC stored on the service processor hard disk. The following window is displayed (Figure 1 on page 9).



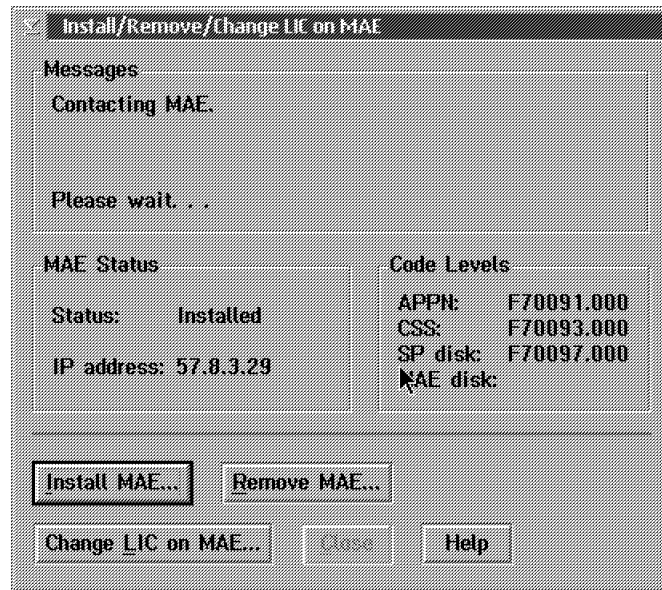


Figure 1. Changing MAE LIC Installation Window

- \_\_\_ 12. Press the **Change LIC on MAE** pushbutton.
- \_\_\_ 13. Click **OK** when prompted to confirm.

It takes about 10 minutes to the MAE LIC. After the MAE LIC has been updated, if there is no additional MCFs to apply, , go to step 16 to perform a general IML. Otherwise, go to next step.

#### Applying the Latest MCF(s)

- \_\_\_ 14. Apply the MCFs (if any) on the new LIC according to the '**Handling the Microcode Fixes on the Licensed Internal Code**' procedure given in the SPIM or Service User's Guide shipped with your SP.

When finished, go to the next step to perform a general IML.

#### Performing a General IML

- \_\_\_ 15. Click on **Close**.
- \_\_\_ 16. On the **MOSS-E View** screen, double click on the **3746-9x0** icon.
- \_\_\_ 17. On the **3746-9x0 Menu** screen, click on **Operation Management**.
- \_\_\_ 18. Double click on **Perform a General IML**; Then click on **Yes** button
- \_\_\_ 19. On the **Perform a General IML** window, click on **No** to start an IML without diagnostic.
- \_\_\_ 20. Click **OK** when prompted.

**End of Procedure**

## 10.1.2 Adapter Code Loading per Processor Type

### Before you start...

Perform the following procedure to define the network routing protocol to be loaded per processor type. If the customer does not want to specify this information, go to 10.1.5, "Logging OFF from Service Processor" on page 12 (All protocols will be loaded in all types of processors).

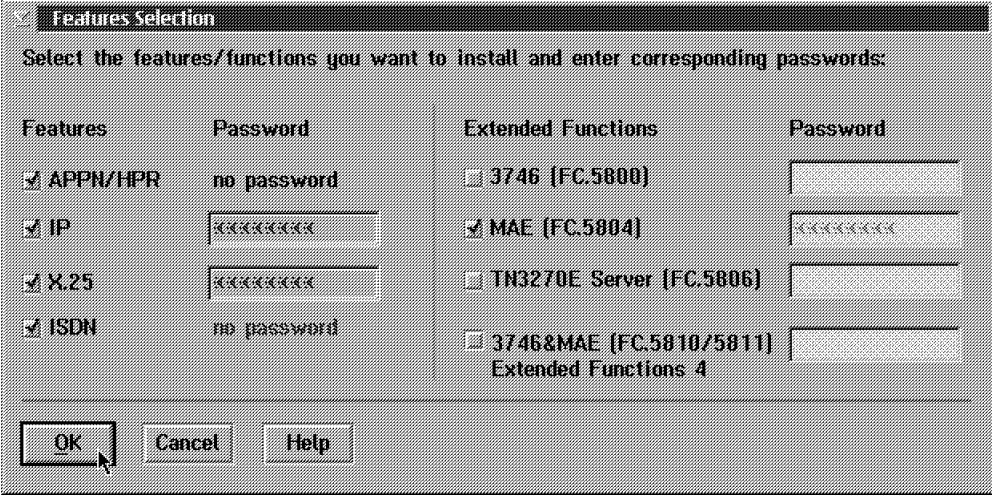
1. On the **Service Processor** menu, click on **Configuration Management**, then double click on **Manage 3745/3746 Installation/Removal**.
2. On the **Controller Installation** menu, select the 3746-9x0 by clicking on the **<3746-9x0>** line, then click on **Select Feature**.

Controller	Type	Model	S/N	Last changes saved
BS8-810L	<3745 not installed>			
	3746	950 (APPN)	12-34567	<Not saved>
BS FVT	3745	900	BS-24681	<Not saved>
	3746	900	BS-24681	<Not saved>
<New>	<3745 not installed>			
	<3746 not installed>			
<New>	<3745 not installed>			
	<3746 not installed>			
<New>	<3745 not installed>			
	<3746 not installed>			

Buttons: Add... Save... Remove... Clean... Change... Repair... Select Feature Cancel Help

Status: 3746 M.E.S. 900->950

3. On the **Feature Selection** menu, click on **OK**.



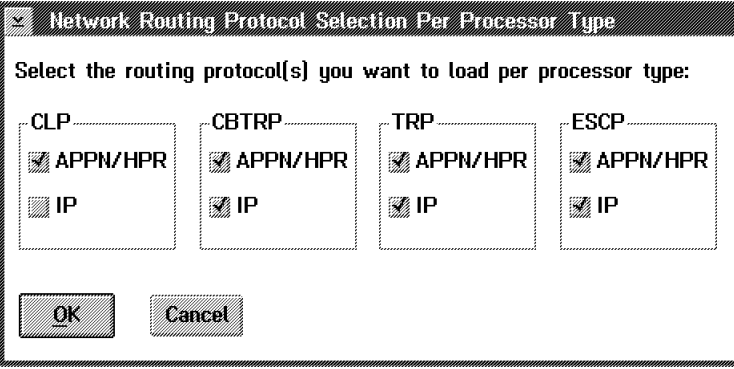
**Features Selection**

Select the features/functions you want to install and enter corresponding passwords:

Features	Password	Extended Functions	Password
<input checked="" type="checkbox"/> APPN/HPR	no password	<input type="checkbox"/> 3746 [FC.5800]	
<input checked="" type="checkbox"/> IP	xxxxxxx	<input checked="" type="checkbox"/> MAE [FC.5804]	xxxxxxx
<input checked="" type="checkbox"/> X.25	xxxxxxx	<input type="checkbox"/> TN3270E Server [FC.5806]	
<input checked="" type="checkbox"/> ISDN	no password	<input type="checkbox"/> 3746&MAE [FC.5810/5811] Extended Functions 4	

OK Cancel Help

4. According to the customer's requirement, On the **Network Routing Protocol Selection Per Processor Type** menu, disable or enable the protocol loaded per processor type, then click on **OK** button.



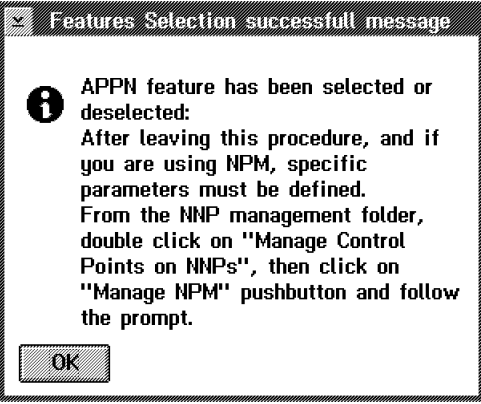
**Network Routing Protocol Selection Per Processor Type**

Select the routing protocol(s) you want to load per processor type:

CLP	CBTRP	TRP	ESCP
<input checked="" type="checkbox"/> APPN/HPR	<input checked="" type="checkbox"/> APPN/HPR	<input checked="" type="checkbox"/> APPN/HPR	<input checked="" type="checkbox"/> APPN/HPR
<input type="checkbox"/> IP	<input checked="" type="checkbox"/> IP	<input checked="" type="checkbox"/> IP	<input checked="" type="checkbox"/> IP

OK Cancel

5. Read the information message, then click on **OK** button.



**Features Selection successfull message**

**i** APPN feature has been selected or deselected:  
After leaving this procedure, and if you are using NPM, specific parameters must be defined.  
From the NNP management folder, double click on "Manage Control Points on NNPs", then click on "Manage NPM" pushbutton and follow the prompt.

OK

6. When completed, click on **OK** and perform a general IML to activate the feature installed, then go to 10.1.5, "Logging OFF from Service Processor" on page 12.

### 10.1.3 Saving Configuration Parameters

- \_\_\_ 1. Double click on the **Service Processor** icon.
- \_\_\_ 2. Click on **Operation Management**.
- \_\_\_ 3. Double click on **Manage Disks and Databases**.
- \_\_\_ 4. Use the radio button to select **Save databases on diskette** to save the configuration parameters. When prompted, insert **Configuration Parameters diskette** (PN 02L3427) into the diskette drive.
- \_\_\_ 5. Click on **OK** and wait for completion. If error, record the message and contact support.
- \_\_\_ 6. Remove the diskette, then click on **Cancel** to exit from the function.

### 10.1.4 Updating Installation Parameters Diskettes

Once you have upgraded the hardware of the machine, you have to regenerate the format on the Installation Parameters Diskettes using the following procedure: (Duration approximately 13 minutes)

- \_\_\_ 1. On the **Service Processor** menu, click on **Configuration Management**, double-click on **Manage 3745/3746 Installation/Removal**.
- \_\_\_ 2. On the **Controller Installation** menu, Click on the **3746-9x0** installed, then Click on **Save**.
- \_\_\_ 3. After the **Saving Active CDF-E as Reference** pop-up window has been displayed, insert the **3746-900 installation parameters diskette (PN 17G5878)** of the 3746-9x0 and click on **OK**.
- \_\_\_ 4. On the third pop up screen confirming CDF-E saved to diskette, remove diskette as instructed and click on **OK**.
- \_\_\_ 5. Perform the above saving procedure for the backup diskettes, then click on **Cancel**.

### 10.1.5 Logging OFF from Service Processor

- \_\_\_ 1. On **MOSS-E View** window, click on **Program**.
- \_\_\_ 2. Click on **LOG OFF MOSS-E**.

## 11.0 Test Procedures

Not applicable.

# 12.0 Field Updating

None.

---

## After Installation (13-15)

### 13.0 Publications Update

None.

### 14.0 Parts Disposition

#### 14.1 Purchased Machines

Refer to the part ownership matrix to determine the correct owner of removed/unused parts.

- For non US Areas, refer to *Hardware and General Service Code Description*.
- For Domestic Areas, returns parts to the customer.

### 15.0 Machine Records

- Install updated machine history provided.

### 16.0 Activity Reporting

- Report the EC installation activity in normal QSAR.

**End of instructions.**